



Demographic and Income Comparison Profile

Montclair Place
 Montclair Plaza
 Rings: 3, 5, 10 mile radii

Prepared by Esri
 Latitude: 34.08738
 Longitude: -117.69344

	3 miles	5 miles	10 miles
Census 2010 Summary			
Population	176,919	452,293	930,458
Households	53,338	131,647	280,610
Families	39,164	100,646	218,007
Average Household Size	3.20	3.36	3.23
Owner Occupied Housing Units	28,208	74,753	181,581
Renter Occupied Housing Units	25,130	56,894	99,029
Median Age	31.6	31.8	33.8
2017 Summary			
Population	187,570	475,979	985,607
Households	56,121	137,538	294,834
Families	41,188	105,065	229,100
Average Household Size	3.23	3.39	3.26
Owner Occupied Housing Units	28,667	75,674	186,057
Renter Occupied Housing Units	27,454	61,864	108,777
Median Age	32.6	32.9	34.9
Median Household Income	\$56,005	\$57,556	\$72,239
Average Household Income	\$76,383	\$79,940	\$95,654
2022 Summary			
Population	194,858	492,861	1,022,842
Households	58,128	141,973	304,861
Families	42,659	108,418	236,899
Average Household Size	3.24	3.40	3.28
Owner Occupied Housing Units	29,603	77,744	191,583
Renter Occupied Housing Units	28,526	64,230	113,278
Median Age	34.0	34.5	36.3
Median Household Income	\$60,730	\$62,679	\$79,272
Average Household Income	\$86,310	\$89,911	\$107,407
Trends: 2017-2022 Annual Rate			
Population	0.77%	0.70%	0.74%
Households	0.71%	0.64%	0.67%
Families	0.70%	0.63%	0.67%
Owner Households	0.64%	0.54%	0.59%
Median Household Income	1.63%	1.72%	1.88%

Source: U.S. Census Bureau, Census 2010 Summary File 1. Esri forecasts for 2017 and 2022.



Demographic and Income Comparison Profile

Montclair Place
Montclair Plaza
Rings: 3, 5, 10 mile radii

Prepared by Esri
Latitude: 34.08738
Longitude: -117.69344

2017 Households by Income	3 miles		5 miles		10 miles	
	Number	Percent	Number	Percent	Number	Percent
<\$15,000	5,630	10.0%	13,631	9.9%	21,758	7.4%
\$15,000 - \$24,999	5,330	9.5%	12,970	9.4%	21,490	7.3%
\$25,000 - \$34,999	5,323	9.5%	12,728	9.3%	21,726	7.4%
\$35,000 - \$49,999	8,229	14.7%	19,164	13.9%	34,086	11.6%
\$50,000 - \$74,999	10,957	19.5%	26,125	19.0%	52,555	17.8%
\$75,000 - \$99,999	7,332	13.1%	18,025	13.1%	41,219	14.0%
\$100,000 - \$149,999	7,423	13.2%	18,907	13.7%	52,069	17.7%
\$150,000 - \$199,999	3,295	5.9%	8,602	6.3%	26,519	9.0%
\$200,000+	2,601	4.6%	7,387	5.4%	23,406	7.9%
Median Household Income	\$56,005		\$57,556		\$72,239	
Average Household Income	\$76,383		\$79,940		\$95,654	
Per Capita Income	\$23,556		\$23,692		\$29,192	

2022 Households by Income	3 miles		5 miles		10 miles	
	Number	Percent	Number	Percent	Number	Percent
<\$15,000	5,964	10.3%	14,364	10.1%	23,011	7.5%
\$15,000 - \$24,999	5,266	9.1%	12,855	9.1%	21,270	7.0%
\$25,000 - \$34,999	5,054	8.7%	11,996	8.4%	20,489	6.7%
\$35,000 - \$49,999	7,482	12.9%	17,439	12.3%	30,729	10.1%
\$50,000 - \$74,999	10,129	17.4%	23,978	16.9%	47,449	15.6%
\$75,000 - \$99,999	8,114	14.0%	19,799	13.9%	43,548	14.3%
\$100,000 - \$149,999	8,656	14.9%	21,795	15.4%	58,116	19.1%
\$150,000 - \$199,999	4,152	7.1%	10,622	7.5%	31,611	10.4%
\$200,000+	3,311	5.7%	9,126	6.4%	28,632	9.4%
Median Household Income	\$60,730		\$62,679		\$79,272	
Average Household Income	\$86,310		\$89,911		\$107,407	
Per Capita Income	\$26,400		\$26,470		\$32,577	

Data Note: Income is expressed in current dollars.

Source: U.S. Census Bureau, Census 2010 Summary File 1. Esri forecasts for 2017 and 2022.



Demographic and Income Comparison Profile

Montclair Place
Montclair Plaza
Rings: 3, 5, 10 mile radii

Prepared by Esri
Latitude: 34.08738
Longitude: -117.69344

2010 Population by Age	3 miles		5 miles		10 miles	
	Number	Percent	Number	Percent	Number	Percent
Age 0 - 4	12,993	7.3%	33,992	7.5%	61,450	6.6%
Age 5 - 9	12,620	7.1%	33,408	7.4%	63,826	6.9%
Age 10 - 14	13,363	7.6%	35,840	7.9%	71,688	7.7%
Age 15 - 19	15,974	9.0%	39,950	8.8%	80,873	8.7%
Age 20 - 24	16,187	9.1%	37,921	8.4%	75,207	8.1%
Age 25 - 34	25,882	14.6%	64,620	14.3%	127,389	13.7%
Age 35 - 44	23,907	13.5%	61,748	13.7%	129,329	13.9%
Age 45 - 54	22,386	12.7%	58,760	13.0%	135,028	14.5%
Age 55 - 64	16,349	9.2%	42,769	9.5%	98,217	10.6%
Age 65 - 74	8,878	5.0%	23,281	5.1%	49,302	5.3%
Age 75 - 84	5,693	3.2%	13,961	3.1%	27,158	2.9%
Age 85+	2,688	1.5%	6,043	1.3%	10,993	1.2%

2017 Population by Age	3 miles		5 miles		10 miles	
	Number	Percent	Number	Percent	Number	Percent
Age 0 - 4	13,156	7.0%	34,342	7.2%	62,634	6.4%
Age 5 - 9	12,860	6.9%	33,690	7.1%	63,744	6.5%
Age 10 - 14	12,827	6.8%	33,872	7.1%	66,620	6.8%
Age 15 - 19	14,639	7.8%	35,936	7.5%	70,958	7.2%
Age 20 - 24	17,323	9.2%	39,875	8.4%	77,327	7.8%
Age 25 - 34	29,686	15.8%	75,128	15.8%	153,673	15.6%
Age 35 - 44	23,902	12.7%	60,531	12.7%	128,236	13.0%
Age 45 - 54	22,235	11.9%	57,452	12.1%	128,384	13.0%
Age 55 - 64	19,331	10.3%	50,315	10.6%	116,649	11.8%
Age 65 - 74	12,363	6.6%	32,049	6.7%	71,859	7.3%
Age 75 - 84	6,122	3.3%	15,596	3.3%	31,978	3.2%
Age 85+	3,126	1.7%	7,193	1.5%	13,546	1.4%

2022 Population by Age	3 miles		5 miles		10 miles	
	Number	Percent	Number	Percent	Number	Percent
Age 0 - 4	13,620	7.0%	35,407	7.2%	65,350	6.4%
Age 5 - 9	12,642	6.5%	32,997	6.7%	63,005	6.2%
Age 10 - 14	13,058	6.7%	34,210	6.9%	66,212	6.5%
Age 15 - 19	14,147	7.3%	34,250	6.9%	66,928	6.5%
Age 20 - 24	16,073	8.2%	36,110	7.3%	68,719	6.7%
Age 25 - 34	30,825	15.8%	77,450	15.7%	160,650	15.7%
Age 35 - 44	26,574	13.6%	67,864	13.8%	146,845	14.4%
Age 45 - 54	22,119	11.4%	56,863	11.5%	123,439	12.1%
Age 55 - 64	20,486	10.5%	52,846	10.7%	119,660	11.7%
Age 65 - 74	14,608	7.5%	38,019	7.7%	86,515	8.5%
Age 75 - 84	7,443	3.8%	19,062	3.9%	40,648	4.0%
Age 85+	3,263	1.7%	7,782	1.6%	14,872	1.5%

Source: U.S. Census Bureau, Census 2010 Summary File 1. Esri forecasts for 2017 and 2022.



Demographic and Income Comparison Profile

Montclair Place
 Montclair Plaza
 Rings: 3, 5, 10 mile radii

Prepared by Esri
 Latitude: 34.08738
 Longitude: -117.69344

2010 Race and Ethnicity	3 miles		5 miles		10 miles	
	Number	Percent	Number	Percent	Number	Percent
White Alone	101,119	57.2%	253,181	56.0%	526,563	56.6%
Black Alone	11,689	6.6%	26,247	5.8%	57,385	6.2%
American Indian Alone	1,694	1.0%	4,607	1.0%	7,828	0.8%
Asian Alone	13,073	7.4%	31,697	7.0%	114,669	12.3%
Pacific Islander Alone	356	0.2%	1,034	0.2%	2,056	0.2%
Some Other Race Alone	40,468	22.9%	114,619	25.3%	177,690	19.1%
Two or More Races	8,520	4.8%	20,908	4.6%	44,268	4.8%
Hispanic Origin (Any Race)	100,809	57.0%	271,310	60.0%	451,119	48.5%

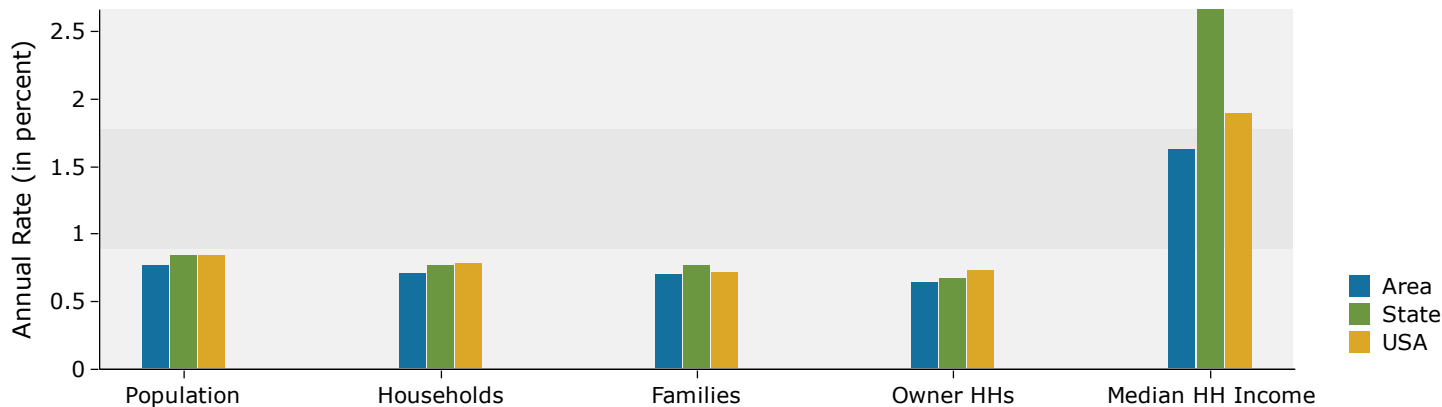
2017 Race and Ethnicity	3 miles		5 miles		10 miles	
	Number	Percent	Number	Percent	Number	Percent
White Alone	103,404	55.1%	257,654	54.1%	533,663	54.1%
Black Alone	11,819	6.3%	26,183	5.5%	59,250	6.0%
American Indian Alone	1,759	0.9%	4,739	1.0%	8,168	0.8%
Asian Alone	15,042	8.0%	36,304	7.6%	132,018	13.4%
Pacific Islander Alone	365	0.2%	1,057	0.2%	2,148	0.2%
Some Other Race Alone	45,542	24.3%	126,714	26.6%	200,029	20.3%
Two or More Races	9,640	5.1%	23,328	4.9%	50,332	5.1%
Hispanic Origin (Any Race)	113,174	60.3%	300,033	63.0%	508,810	51.6%

2022 Race and Ethnicity	3 miles		5 miles		10 miles	
	Number	Percent	Number	Percent	Number	Percent
White Alone	105,902	54.3%	263,454	53.5%	541,910	53.0%
Black Alone	11,776	6.0%	25,948	5.3%	59,546	5.8%
American Indian Alone	1,794	0.9%	4,798	1.0%	8,320	0.8%
Asian Alone	16,543	8.5%	39,903	8.1%	145,057	14.2%
Pacific Islander Alone	374	0.2%	1,079	0.2%	2,217	0.2%
Some Other Race Alone	48,256	24.8%	133,115	27.0%	212,329	20.8%
Two or More Races	10,212	5.2%	24,563	5.0%	53,463	5.2%
Hispanic Origin (Any Race)	122,311	62.8%	321,653	65.3%	552,107	54.0%

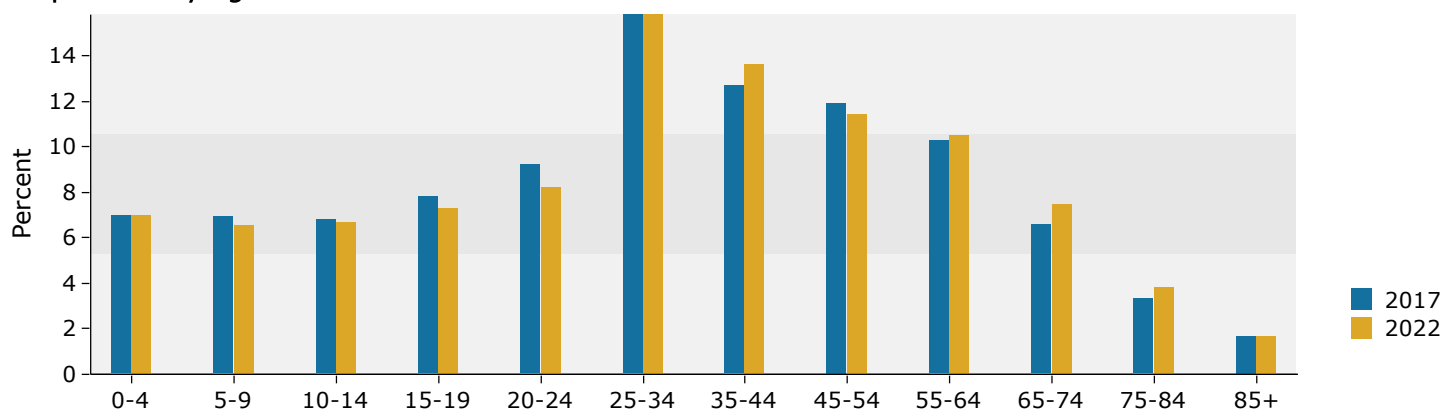
Source: U.S. Census Bureau, Census 2010 Summary File 1. Esri forecasts for 2017 and 2022.

3 miles

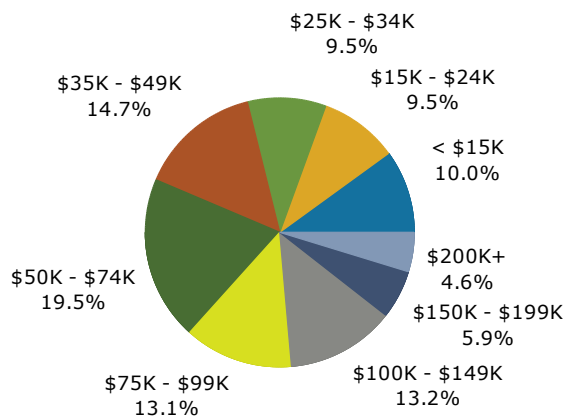
Trends 2017-2022



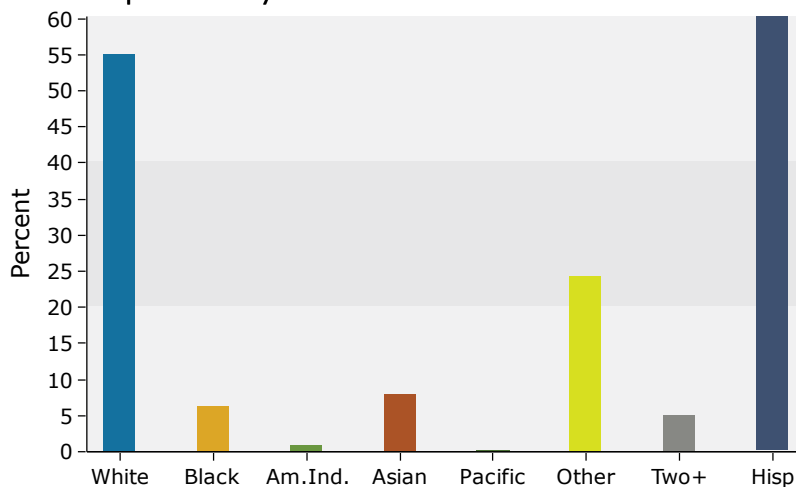
Population by Age



2017 Household Income



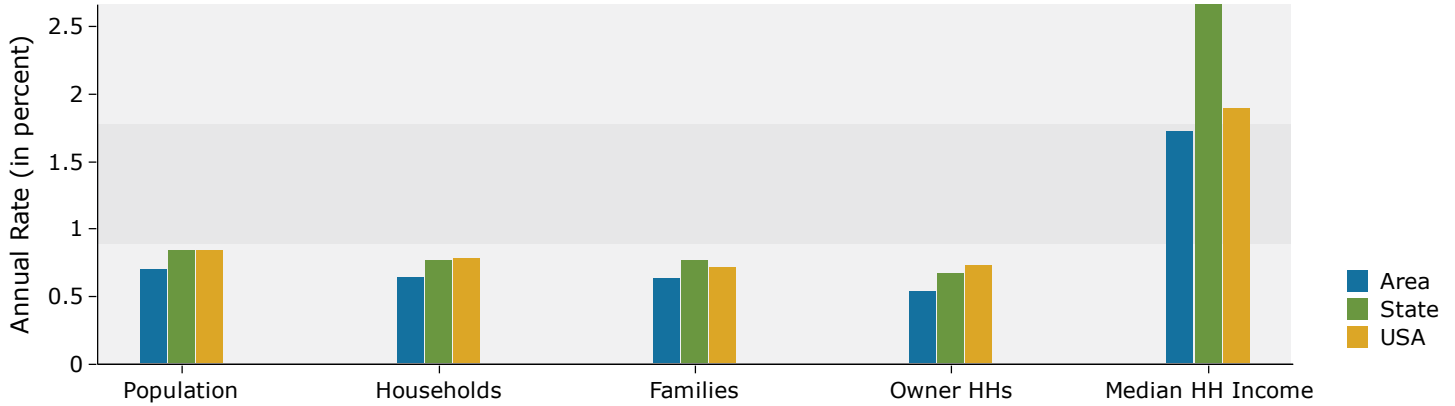
2017 Population by Race



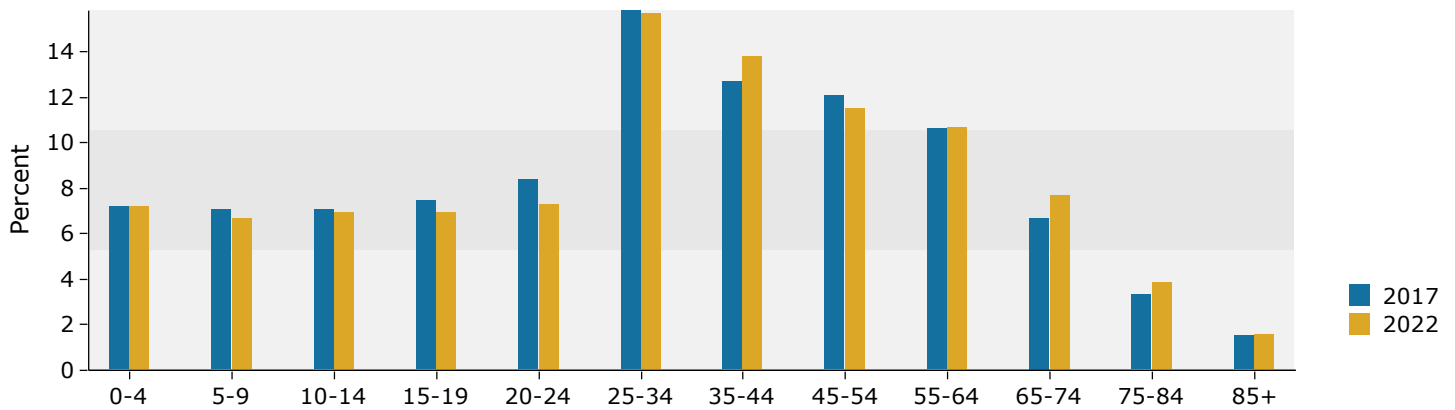
Source: U.S. Census Bureau, Census 2010 Summary File 1. Esri forecasts for 2017 and 2022.

5 miles

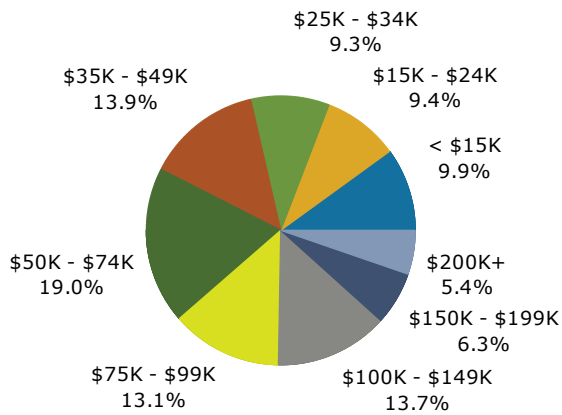
Trends 2017-2022



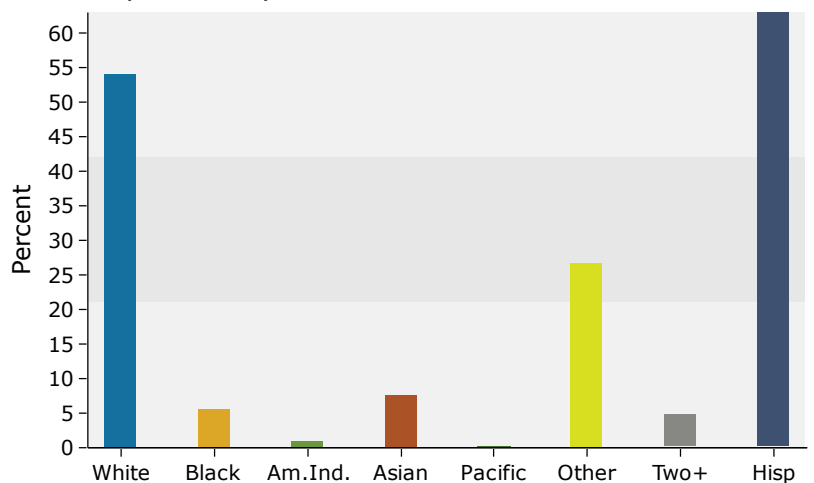
Population by Age



2017 Household Income



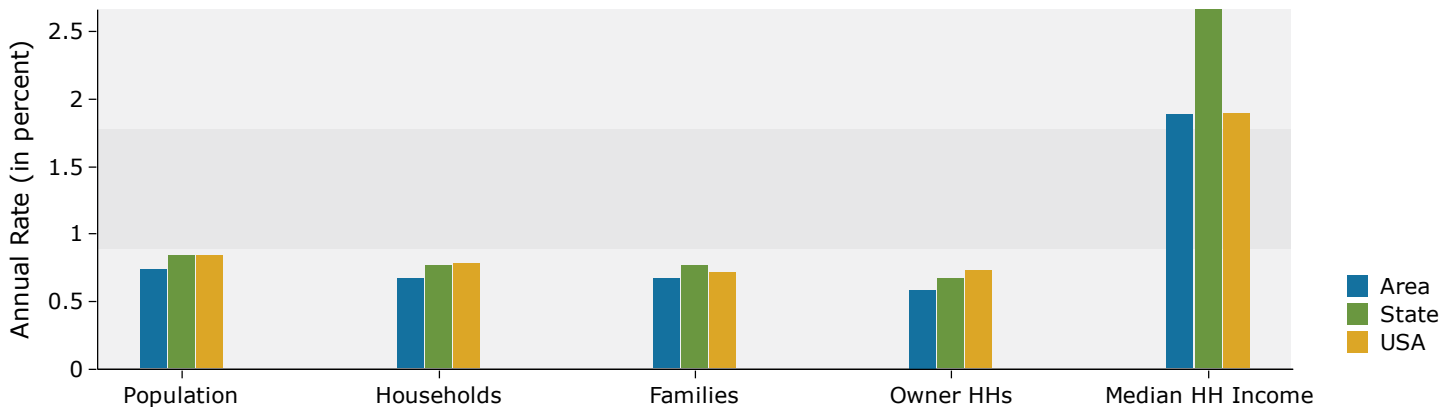
2017 Population by Race



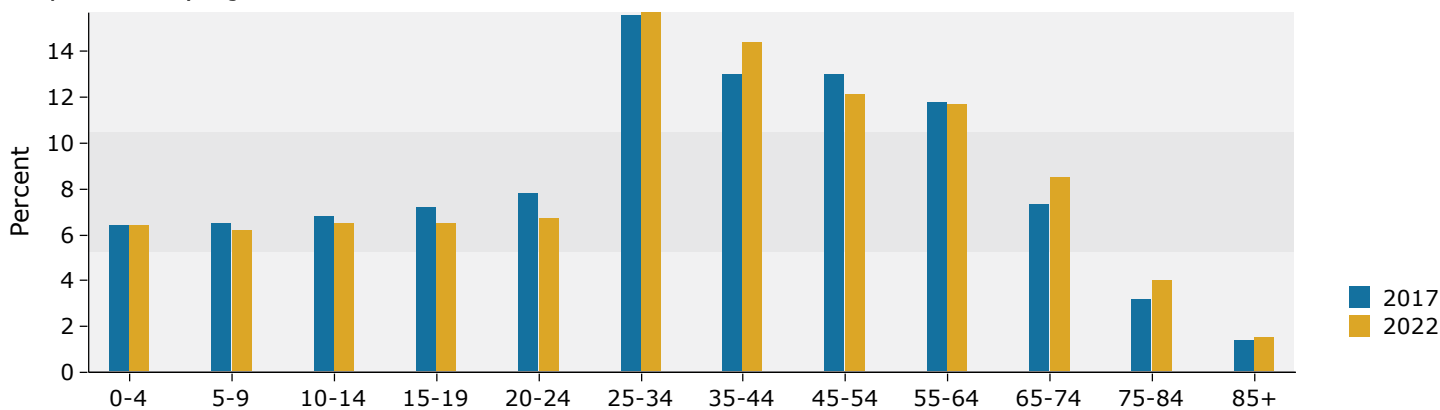
Source: U.S. Census Bureau, Census 2010 Summary File 1. Esri forecasts for 2017 and 2022.

10 miles

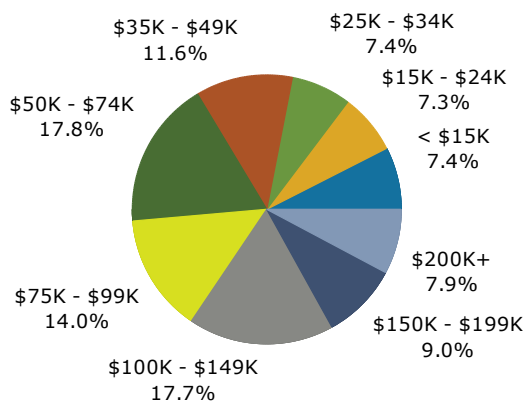
Trends 2017-2022



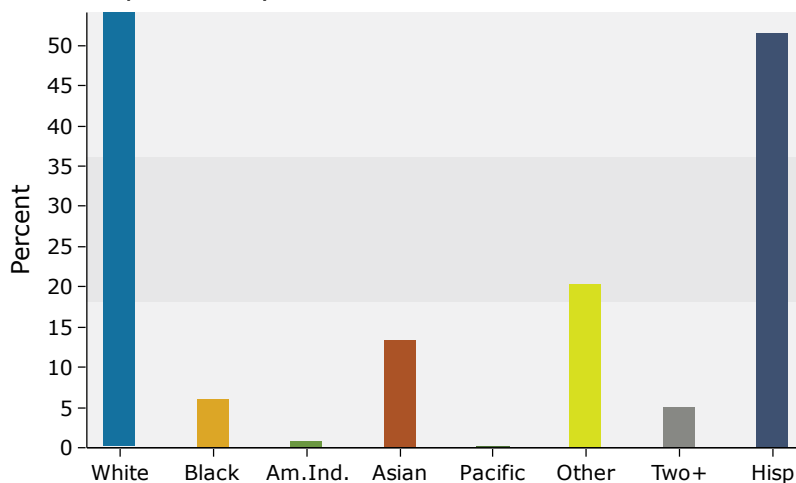
Population by Age



2017 Household Income



2017 Population by Race



Source: U.S. Census Bureau, Census 2010 Summary File 1. Esri forecasts for 2017 and 2022.