



# Demographic and Income Comparison Profile

5060 S Plaza Ln, Montclair, California, 91763  
Rings: 3, 5, 10 mile radii

Prepared by Esri  
Latitude: 34.08506  
Longitude: -117.69477

	3 miles	5 miles	10 miles
<b>Census 2010 Summary</b>			
Population	177,851	460,269	933,763
Households	53,226	132,948	281,546
Families	39,100	101,986	218,847
Average Household Size	3.23	3.39	3.23
Owner Occupied Housing Units	27,828	75,510	182,570
Renter Occupied Housing Units	25,398	57,438	98,976
Median Age	31.3	31.7	33.8
<b>2016 Summary</b>			
Population	185,625	478,184	974,983
Households	55,097	136,972	291,149
Families	40,470	105,045	226,438
Average Household Size	3.25	3.42	3.27
Owner Occupied Housing Units	27,770	75,291	183,883
Renter Occupied Housing Units	27,327	61,681	107,266
Median Age	32.1	32.6	34.6
Median Household Income	\$53,626	\$55,552	\$69,687
Average Household Income	\$71,375	\$75,778	\$91,227
<b>2021 Summary</b>			
Population	192,182	494,104	1,009,125
Households	56,848	140,977	299,895
Families	41,759	108,108	233,301
Average Household Size	3.27	3.44	3.29
Owner Occupied Housing Units	28,510	77,110	188,618
Renter Occupied Housing Units	28,338	63,867	111,277
Median Age	33.5	34.1	36.1
Median Household Income	\$57,396	\$60,096	\$78,667
Average Household Income	\$77,645	\$82,287	\$99,207
<b>Trends: 2016-2021 Annual Rate</b>			
Population	0.70%	0.66%	0.69%
Households	0.63%	0.58%	0.59%
Families	0.63%	0.58%	0.60%
Owner Households	0.53%	0.48%	0.51%
Median Household Income	1.37%	1.58%	2.45%

Source: U.S. Census Bureau, Census 2010 Summary File 1. Esri forecasts for 2016 and 2021.



# Demographic and Income Comparison Profile

5060 S Plaza Ln, Montclair, California, 91763  
Rings: 3, 5, 10 mile radii

Prepared by Esri  
Latitude: 34.08506  
Longitude: -117.69477

2016 Households by Income	3 miles		5 miles		10 miles	
	Number	Percent	Number	Percent	Number	Percent
<\$15,000	6,018	10.9%	14,826	10.8%	23,385	8.0%
\$15,000 - \$24,999	5,288	9.6%	12,832	9.4%	21,070	7.2%
\$25,000 - \$34,999	5,436	9.9%	13,083	9.6%	21,984	7.6%
\$35,000 - \$49,999	8,565	15.5%	19,871	14.5%	35,299	12.1%
\$50,000 - \$74,999	10,853	19.7%	26,141	19.1%	52,071	17.9%
\$75,000 - \$99,999	7,197	13.1%	17,978	13.1%	40,822	14.0%
\$100,000 - \$149,999	7,035	12.8%	18,571	13.6%	52,424	18.0%
\$150,000 - \$199,999	2,713	4.9%	7,475	5.5%	24,323	8.4%
\$200,000+	1,992	3.6%	6,195	4.5%	19,765	6.8%
Median Household Income	\$53,626		\$55,552		\$69,687	
Average Household Income	\$71,375		\$75,778		\$91,227	
Per Capita Income	\$21,911		\$22,307		\$27,822	

2021 Households by Income	3 miles		5 miles		10 miles	
	Number	Percent	Number	Percent	Number	Percent
<\$15,000	6,666	11.7%	16,211	11.5%	25,132	8.4%
\$15,000 - \$24,999	5,034	8.9%	12,353	8.8%	19,783	6.6%
\$25,000 - \$34,999	5,277	9.3%	12,546	8.9%	20,629	6.9%
\$35,000 - \$49,999	7,877	13.9%	17,857	12.7%	31,575	10.5%
\$50,000 - \$74,999	9,397	16.5%	23,273	16.5%	44,348	14.8%
\$75,000 - \$99,999	8,253	14.5%	20,163	14.3%	44,697	14.9%
\$100,000 - \$149,999	8,667	15.2%	22,331	15.8%	62,200	20.7%
\$150,000 - \$199,999	3,378	5.9%	9,185	6.5%	29,345	9.8%
\$200,000+	2,299	4.0%	7,060	5.0%	22,180	7.4%
Median Household Income	\$57,396		\$60,096		\$78,667	
Average Household Income	\$77,645		\$82,287		\$99,207	
Per Capita Income	\$23,658		\$24,056		\$30,047	

**Data Note:** Income is expressed in current dollars.

**Source:** U.S. Census Bureau, Census 2010 Summary File 1. Esri forecasts for 2016 and 2021.



# Demographic and Income Comparison Profile

5060 S Plaza Ln, Montclair, California, 91763  
Rings: 3, 5, 10 mile radii

Prepared by Esri  
Latitude: 34.08506  
Longitude: -117.69477

2010 Population by Age	3 miles		5 miles		10 miles	
	Number	Percent	Number	Percent	Number	Percent
Age 0 - 4	13,232	7.4%	34,734	7.5%	61,654	6.6%
Age 5 - 9	12,789	7.2%	34,152	7.4%	64,023	6.9%
Age 10 - 14	13,498	7.6%	36,601	8.0%	71,918	7.7%
Age 15 - 19	16,141	9.1%	40,787	8.9%	81,133	8.7%
Age 20 - 24	16,346	9.2%	38,691	8.4%	75,399	8.1%
Age 25 - 34	26,214	14.7%	65,731	14.3%	127,709	13.7%
Age 35 - 44	24,146	13.6%	62,841	13.7%	129,840	13.9%
Age 45 - 54	22,390	12.6%	59,681	13.0%	135,542	14.5%
Age 55 - 64	16,198	9.1%	43,236	9.4%	98,658	10.6%
Age 65 - 74	8,718	4.9%	23,533	5.1%	49,553	5.3%
Age 75 - 84	5,546	3.1%	14,162	3.1%	27,285	2.9%
Age 85+	2,635	1.5%	6,122	1.3%	11,051	1.2%

2016 Population by Age	3 miles		5 miles		10 miles	
	Number	Percent	Number	Percent	Number	Percent
Age 0 - 4	13,360	7.2%	35,092	7.3%	62,650	6.4%
Age 5 - 9	12,925	7.0%	34,149	7.1%	63,529	6.5%
Age 10 - 14	13,021	7.0%	34,878	7.3%	67,568	6.9%
Age 15 - 19	14,888	8.0%	37,203	7.8%	72,519	7.4%
Age 20 - 24	17,437	9.4%	40,757	8.5%	77,935	8.0%
Age 25 - 34	29,097	15.7%	73,996	15.5%	148,287	15.2%
Age 35 - 44	23,918	12.9%	61,287	12.8%	127,576	13.1%
Age 45 - 54	22,133	11.9%	58,386	12.2%	129,515	13.3%
Age 55 - 64	18,680	10.1%	49,750	10.4%	114,460	11.7%
Age 65 - 74	11,399	6.1%	30,413	6.4%	67,329	6.9%
Age 75 - 84	5,839	3.1%	15,335	3.2%	30,754	3.2%
Age 85+	2,928	1.6%	6,938	1.5%	12,860	1.3%

2021 Population by Age	3 miles		5 miles		10 miles	
	Number	Percent	Number	Percent	Number	Percent
Age 0 - 4	13,698	7.1%	35,922	7.3%	64,793	6.4%
Age 5 - 9	12,626	6.6%	33,279	6.7%	62,397	6.2%
Age 10 - 14	13,110	6.8%	34,713	7.0%	66,088	6.5%
Age 15 - 19	14,191	7.4%	34,913	7.1%	67,290	6.7%
Age 20 - 24	16,175	8.4%	36,955	7.5%	69,446	6.9%
Age 25 - 34	30,713	16.0%	77,891	15.8%	158,550	15.7%
Age 35 - 44	26,040	13.5%	67,095	13.6%	141,988	14.1%
Age 45 - 54	21,998	11.4%	57,826	11.7%	124,268	12.3%
Age 55 - 64	19,993	10.4%	52,978	10.7%	119,330	11.8%
Age 65 - 74	13,684	7.1%	36,805	7.4%	82,990	8.2%
Age 75 - 84	6,845	3.6%	18,030	3.6%	37,596	3.7%
Age 85+	3,110	1.6%	7,696	1.6%	14,388	1.4%

Source: U.S. Census Bureau, Census 2010 Summary File 1. Esri forecasts for 2016 and 2021.



# Demographic and Income Comparison Profile

5060 S Plaza Ln, Montclair, California, 91763  
Rings: 3, 5, 10 mile radii

Prepared by Esri  
Latitude: 34.08506  
Longitude: -117.69477

2010 Race and Ethnicity	3 miles		5 miles		10 miles	
	Number	Percent	Number	Percent	Number	Percent
White Alone	100,594	56.6%	256,890	55.8%	527,775	56.5%
Black Alone	11,806	6.6%	26,340	5.7%	57,341	6.1%
American Indian Alone	1,726	1.0%	4,750	1.0%	7,839	0.8%
Asian Alone	12,954	7.3%	32,087	7.0%	116,497	12.5%
Pacific Islander Alone	362	0.2%	1,039	0.2%	2,057	0.2%
Some Other Race Alone	41,854	23.5%	117,953	25.6%	177,895	19.1%
Two or More Races	8,555	4.8%	21,211	4.6%	44,359	4.8%
Hispanic Origin (Any Race)	103,359	58.1%	279,367	60.7%	451,883	48.4%

2016 Race and Ethnicity	3 miles		5 miles		10 miles	
	Number	Percent	Number	Percent	Number	Percent
White Alone	101,753	54.8%	259,174	54.2%	530,053	54.4%
Black Alone	11,824	6.4%	26,078	5.5%	58,445	6.0%
American Indian Alone	1,756	0.9%	4,807	1.0%	8,042	0.8%
Asian Alone	14,576	7.9%	35,968	7.5%	130,695	13.4%
Pacific Islander Alone	371	0.2%	1,064	0.2%	2,146	0.2%
Some Other Race Alone	45,920	24.7%	127,962	26.8%	196,370	20.1%
Two or More Races	9,424	5.1%	23,130	4.8%	49,231	5.0%
Hispanic Origin (Any Race)	113,226	61.0%	303,156	63.4%	499,697	51.3%

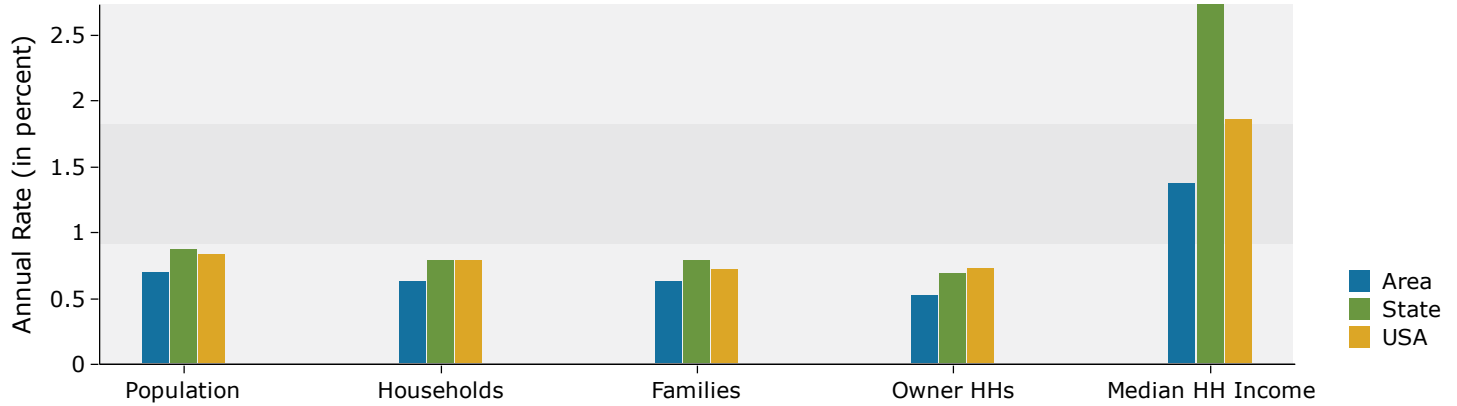
  

2021 Race and Ethnicity	3 miles		5 miles		10 miles	
	Number	Percent	Number	Percent	Number	Percent
White Alone	103,878	54.1%	264,457	53.5%	536,442	53.2%
Black Alone	11,718	6.1%	25,722	5.2%	58,424	5.8%
American Indian Alone	1,781	0.9%	4,846	1.0%	8,170	0.8%
Asian Alone	16,015	8.3%	39,522	8.0%	143,424	14.2%
Pacific Islander Alone	375	0.2%	1,076	0.2%	2,197	0.2%
Some Other Race Alone	48,469	25.2%	134,187	27.2%	208,294	20.6%
Two or More Races	9,946	5.2%	24,293	4.9%	52,173	5.2%
Hispanic Origin (Any Race)	121,883	63.4%	324,405	65.7%	541,781	53.7%

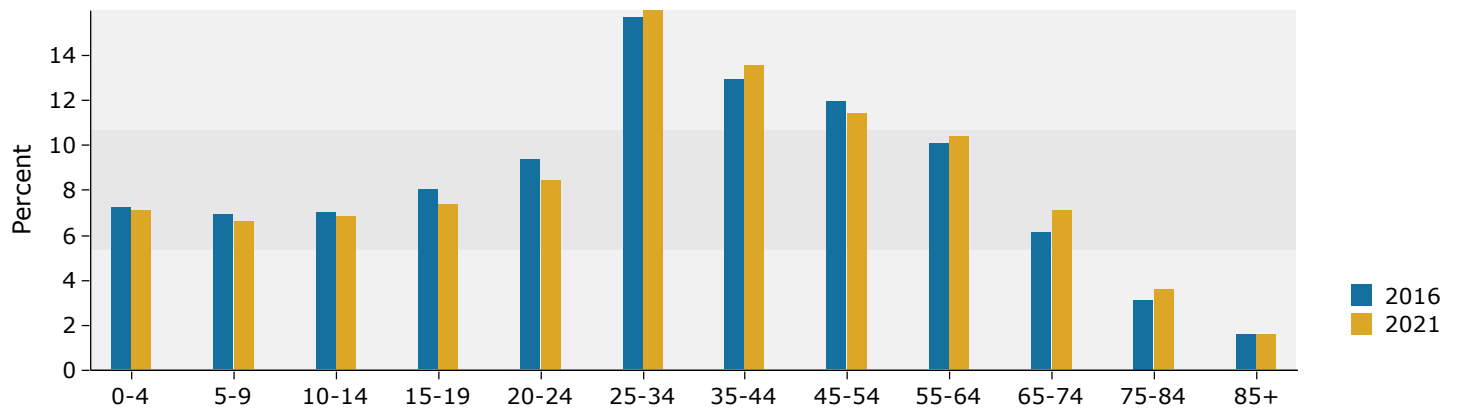
Source: U.S. Census Bureau, Census 2010 Summary File 1. Esri forecasts for 2016 and 2021.

## 3 miles

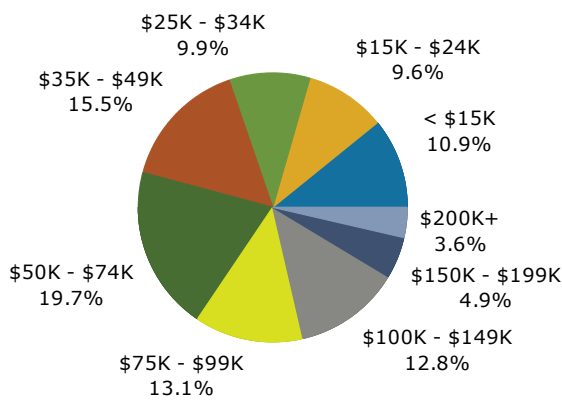
### Trends 2016-2021



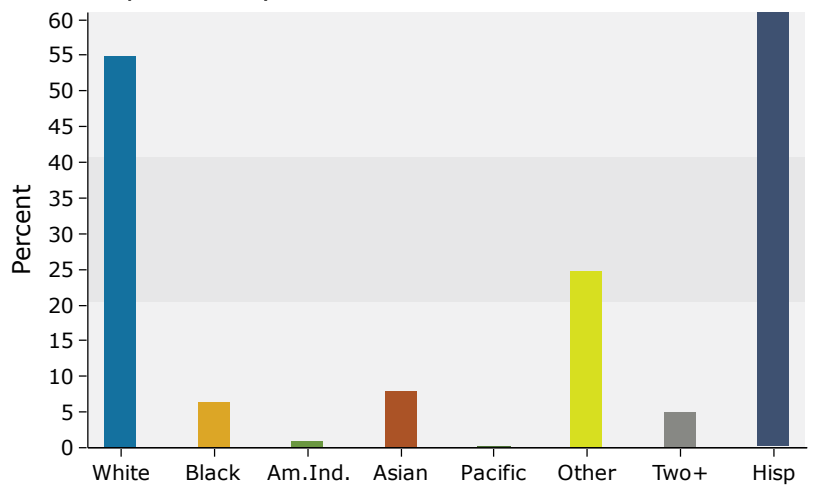
### Population by Age



### 2016 Household Income



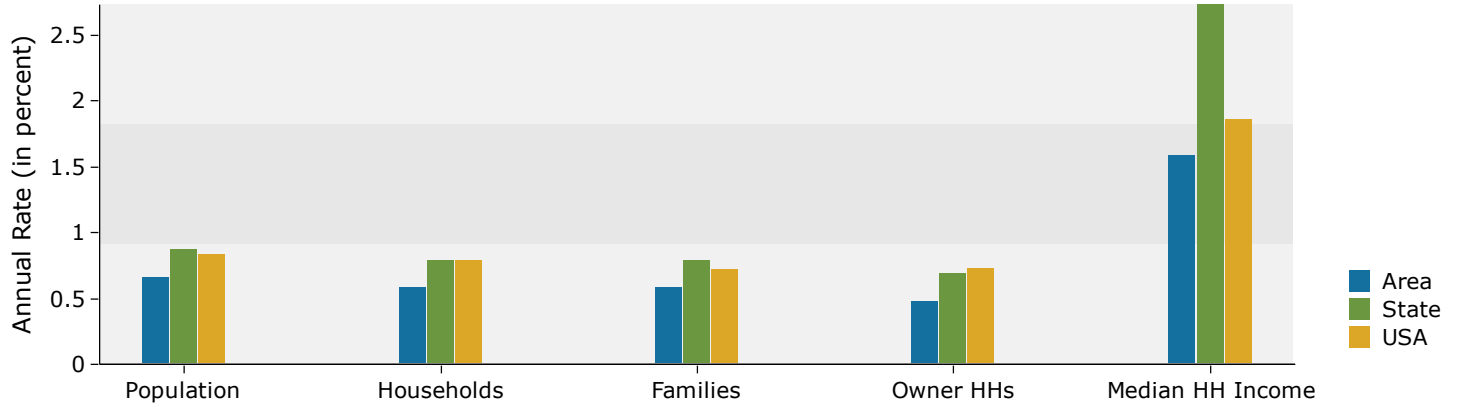
### 2016 Population by Race



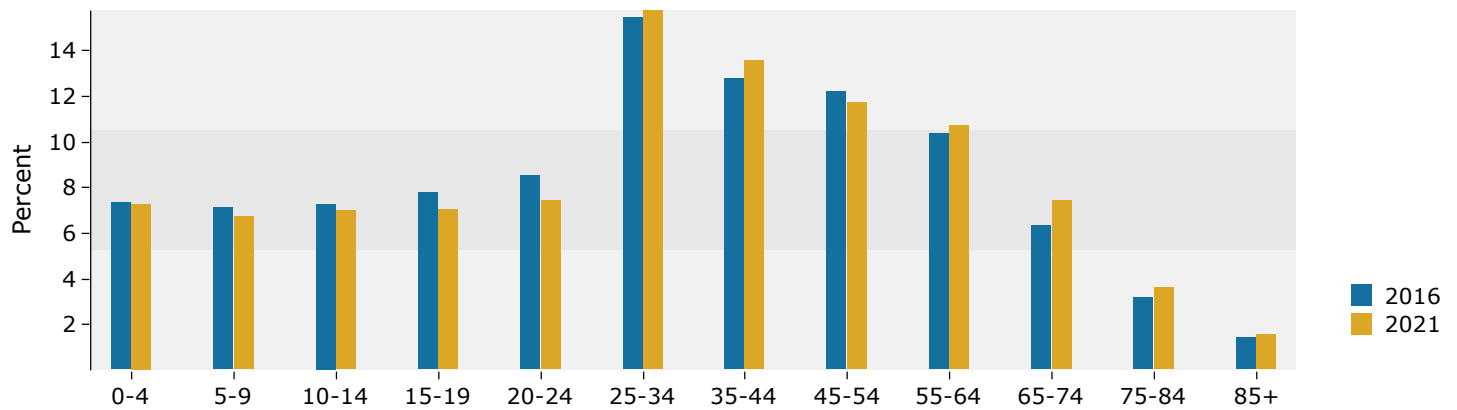
Source: U.S. Census Bureau, Census 2010 Summary File 1. Esri forecasts for 2016 and 2021.

## 5 miles

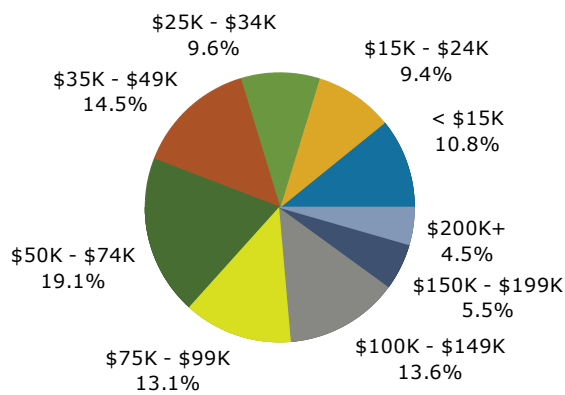
### Trends 2016-2021



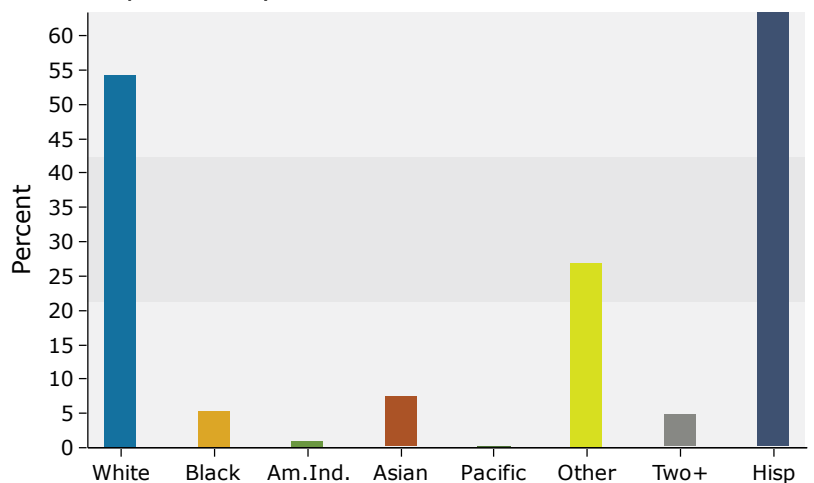
### Population by Age



### 2016 Household Income



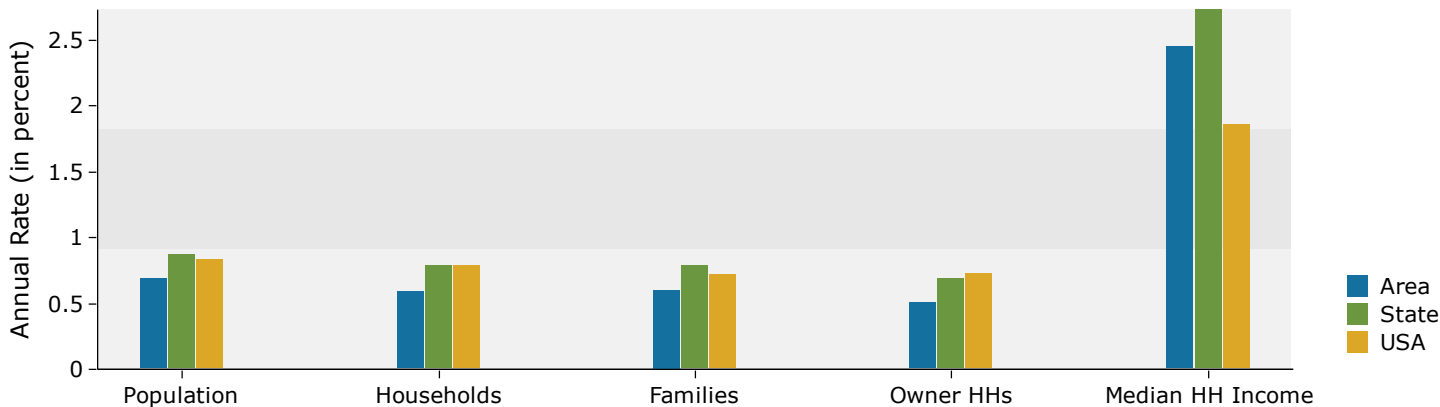
### 2016 Population by Race



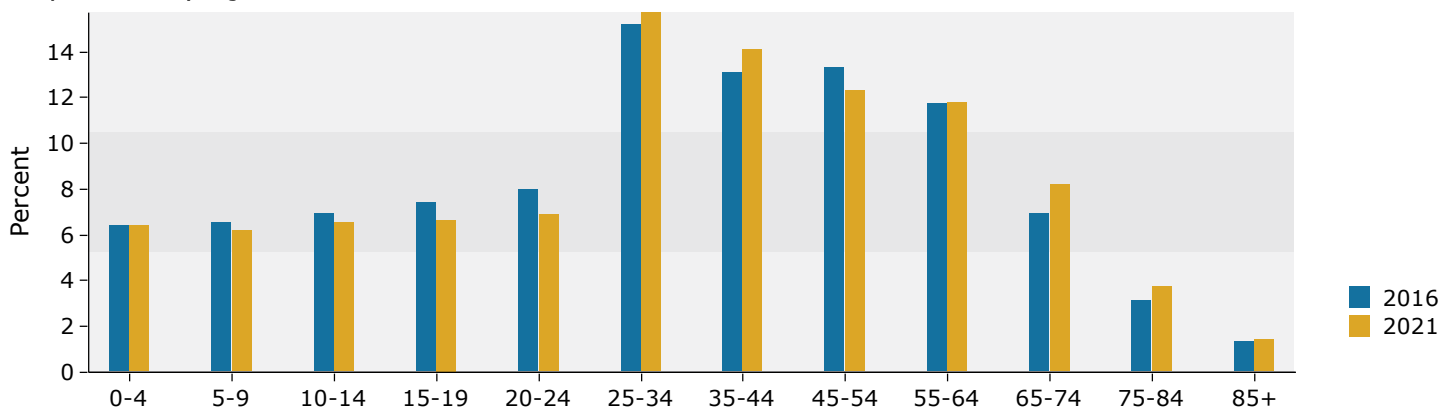
Source: U.S. Census Bureau, Census 2010 Summary File 1. Esri forecasts for 2016 and 2021.

## 10 miles

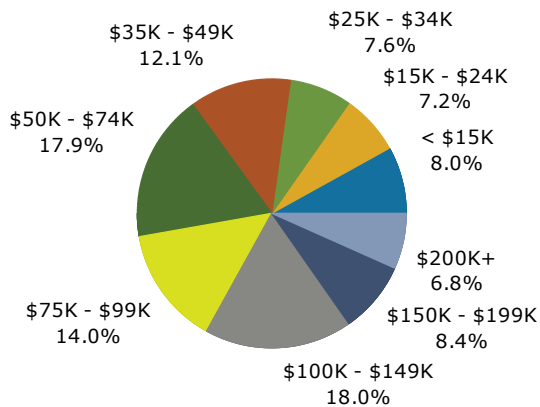
### Trends 2016-2021



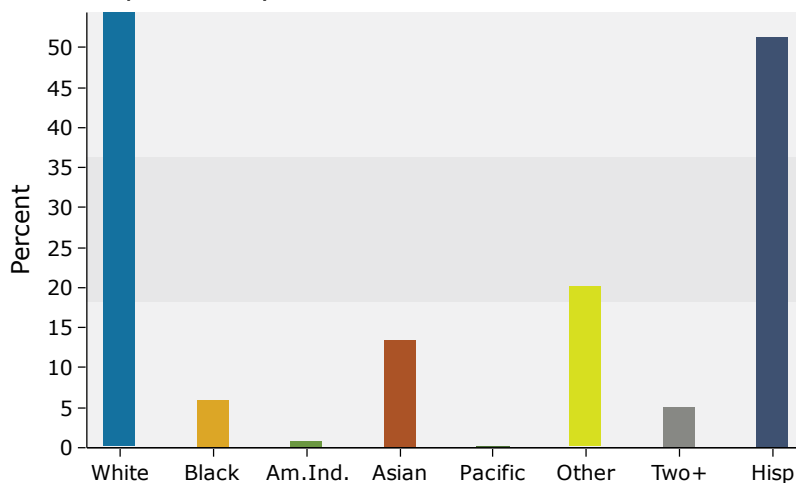
### Population by Age



### 2016 Household Income



### 2016 Population by Race



Source: U.S. Census Bureau, Census 2010 Summary File 1. Esri forecasts for 2016 and 2021.